

North Texas
PC NEWS

The logo consists of a stylized computer monitor with a keyboard below it. The letters 'PC' are superimposed on the monitor. To the left of the monitor, the words 'North Texas' are written in a cursive font. To the right of the monitor, the word 'NEWS' is written in a bold, blocky font.

North Texas PC Users Group

11.9

September 1992



North Texas PC NEWS

Published monthly by members of North Texas Personal Computer Users Group for their use. Members each receive a free subscription; for others, price of the NEWS is \$2 per copy. Members are requested to notify the Membership Director in writing of address changes. Send all editorial correspondence to: Editor, North Texas PC NEWS, 10429 N. MacArthur, #360, Irving, TX 75063. Send address changes to: Membership Director, NTPCUG, P.O. Box 780066, Dallas, TX 75378-0066.

Publisher John Pribyl
(817)275-4109

Editor Doug McQuaid
(214)402-0538

Assistant Editors Gerry Helne
(214)938-7266
Alan Lintel
(214)220-8285
Randy Lahti
(817)429-5255

Newsletter Exchange Diane Arnold

Advertising Director John Pribyl, (acting) -
(817)275-4109
(Mail all advertising material
and ad payments to
North Texas PC NEWS
2025 Rockcreek Drive
Arlington, TX 78010)

The opinions expressed herein are those of the authors and do not necessarily reflect those of the Group or its members. Copyright © 1992 by North Texas PC NEWS. (Articles without specific copyright notices may be reproduced unchanged by other not-for-profit User Groups if credit is given to the author and the publication.)

Deadline:

All advertising and other material for publication, in North Texas PC NEWS must be received by the NEWS staff by the 10th of the month prior to publication. See deadline information below.

Circulation:

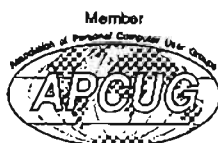
North Texas PC NEWS circulation was 2035 last month. Member distribution was 1694; remaining copies were distributed to PC user groups around the country, and to advertisers, prospective members and others with common interests.

The editors of North Texas PC NEWS use Microsoft Word for Windows. This issue of North Texas PC NEWS was composed using Xerox Ventura Publisher. Core! HEADLINE and Core!DRAW were used for some headings. Repro was printed on a NEC LC-890 Laser Printer. Principal typefaces include: Palatino, Helvetica and Zapf Chancery.

DEADLINE
Copy deadline for October
North Texas PC NEWS:
Thursday, September 10th

Meeting Dates:

September Meeting - 2nd Sat.
October Meeting - 3rd Sat.
November Meeting tentative schedule -
2nd Saturday.



Submitting Articles for Publication in North Texas PC NEWS

1. **Article Style.** Type all copy flush left without justification. This includes headings, bylines, and the first line of each paragraph. Place a credit byline (author's name) between the title and first paragraph. Leave a blank line between paragraphs.

2. **Media.** All copy exceeding 10 lines should be submitted via the NTPCUG BBS or on floppy diskette(s) - (5.25" or 3.5" DOS formatted). If you want the disk returned please include a self-addressed return-postage-paid mailer. If you submit your article in hardcopy and expect us to transcribe it, bear in mind that we don't type so well. Most times, hardcopy-only-articles get filed in the Void.

3. **File Formats.** ASCII text files are preferred. Use .TXT extension for ASCII files. If formatting is crucial, Microsoft WORD and WordPerfect files will be accepted. Other word processor file formats may be acceptable but only if the article is accompanied by hardcopy and an ASCII file version of the article. Word processor files create a lot of extraneous work for the editors. If the article can be ASCII-fied, please do so.

3. **Submitting Articles.** You may use one of three methods.

a) **NTPCUG BBS (Preferred).** Log-on to the BBS and select (U)pload from the main menu. Your default file transfer protocol will be displayed. If you want to change your default protocol, use the (P)rofile option. Once you have set the file transfer protocol, select the (A)rticle option from the upload menu. You will be prompted for the filename to upload. Enter the filename (don't use drive or path name). The BBS will prompt you to begin the file transfer. (Refer to your communications software manual for instructions on transferring files.) After the file transfer has been completed, you will be prompted to, "press any key to continue..." You will then be prompted for a one-line description of the file. Enter the description. To exit the Article Upload Menu press ENTER until you get back to the Main Menu. (OPTIONAL - Send a BBS mail message to Douglas McQuaid regarding your submitted article.)

b) **Snail Mail (a.k.a. U.S. Postal Service).** Put the article on a floppy diskette and mail it to: 10429 N. MacArthur, #360, Irving, TX 75063

c) **SneakerNet.** Track down one of the editors at the monthly meeting and give them a diskette with the article on it.

Table of Contents

| | |
|--|----|
| President's Message | 1 |
| Andy Oliver | |
| Cleaning | 2 |
| Mike Firth | |
| The Borland Trip | 4 |
| Jim Hoisington | |
| The Catalog Disk: what's on it and how to use it | 6 |
| Kathryn Loafman and Mark Gruner | |
| Variety Store | 8 |
| Reagan Andrews, Ph.D. | |
| Cells & Ranges | 12 |
| Betty Brooks | |
| What you see is not always what you get | 15 |
| Utah PCUG | |
| Picture Wizard from Arts & Letters | 19 |
| Kim Oliver | |

Special Items:

| | |
|--------------------------------------|----|
| Agenda | 1 |
| Application Blank | 15 |
| SIG Reports | 16 |
| Volunteer Guide | 20 |
| Officers, Meetings & Times | 21 |

Program for September _____ Timothy Carmichael _____

9:00 AM - 10:00 AM

The Norton Utilities

Symantec Corporation

This presentation of the latest version of The Norton Utilities will show you all the available features for data recovery and protection, hard disk tuneup, DOS enhancements and other functions. Since the first version was introduced in 1982, The Norton Utilities has set industry standards for comprehensive DOS support utilities. The current version is more extensive than ever, and gives support for DOS 5.0, Windows 3.1 and networks. There will be a drawing for free products.

10:00 AM - 11:00 AM

The Norton Desktops for DOS and Windows

Symantec Corporation

The Norton Desktop for DOS and The Norton Desktop for Windows are two software packages with similar design and function, using the same interface and common keystrokes. This consistency across DOS and Windows allows people and data to move easily from one operating environment to another. The GUI desktops give you tools for data backup, virus protection, file recovery and viewing, hard disk optimization and other features. There will be a drawing free products.

11:00 AM - 11:30 AM

NTPCUG Business Meeting

There will (really) be a drawing for free copies of several types of software and hundreds of diskettes.

1:00 PM - 2:00 PM

Find Your Next Home With a PC

COMARD Network

Dave Shumaker, President

COMARD Network is a computer advertised real estate data base service. It is free and provides 24 hour computer access from anywhere locally, nationally, or worldwide. For homes all over the Metroplex, you can be as general or as detailed as you like... price range, schools, locations, bedrooms, or any combination of available information. The system instantly displays an extensive list of homes within your guidelines including detailed descriptions, open houses and photos.

* Tickets for each drawing will be given out from 10 minutes before until 15 minutes after the start-time of the meeting to attending NTPCUG members who show proof of membership.



Pres Sez...

BBS

The hard disk drive on the club's Bulletin Board System crashed the Saturday of our last meeting. Thanks to our crack BBS staff, it was up and running again on Sunday (with a new drive). My appreciation to the spouses of the volunteers for their understanding of the nature of this crisis two days before the newsletter deadline.

Membership

Jim Hoisington, our Membership Director, is asked [by me] at the Saturday business meetings, "What is the membership?" and he shouts out the latest count. Recently, Jim got a call at home from someone who identified himself and asked, "What is the membership?" at which Jim replied "sixteen hundred and ninety six." After an extended silence, the caller asked, "Is that per year?" Realizing what the caller wanted, Jim replied, "Membership dues are \$24.00 per year."

Related SIG Notes

The Mid-Cities PC Users Group has joined the Computer Council of Dallas so they can have one Special Interest Group meeting at Infomart on Super Saturday. Micrographx Corporation is assisting MCPCUG

in putting on a Micrographx graphics SIG meeting from 10:00 to 12:00. This is a PC product that may be of interest to NTPCUG members. Drop in, our members are always welcomed.

Any of the group meetings on Saturday are open to the public, so if you see one that interests you, whether it's CASE, Personal Robotics, Apples, Ataris, Commodores, or the Center for Computer Assistance to the Disabled, feel free to attend their meetings.

A member has expressed an interest in leading a Desktop Publishing SIG. Contact Dee Lewis Graber on the BBS or Alex Lilley, the SIG Coordinator, if you would be interested in attending.

Usability Testing

If you attended the August business meeting, you found out about a company in town called Usability Sciences Corporation, that lets users test software while they are being videotaped. You must spend 2-1/2 to 3 hours, sign a confidentiality agreement, and agree to accept \$100 compensation. Call Debra Green at 550-1599 for a copy of the products they test. Remember to be honest about your level of experience because they are looking for all levels of users, and THE CAMERA IS ON.

Graduates

If you have taken the 16 courses in our Personal Users (Beginners) classes, Bob Presley, the SIG leader,

has a certificate of completion with your name on it. Bob also includes a complete set of the class notes with your diploma. Please stop by before or after one of the four SIG meetings on Saturday and pick yours up. And Congratulations.

What are the Officer's up to?

From the July 14, 1992 Officer's meeting minutes:

Advertising dollars continue to trickle in. Advertisers in the NTPCUG News help defray the expenses of the group and keep our membership dues down. If you have an inside contact at a computer related company's advertising department, show them our newsletter and encourage them to spend some money here. It will pay off for them and the group.

9600 baud modems for the BBS are still in our future. Something about a UART chip from a bankrupt modem company is the only thing holding this up. Yes, you can use your 300, 1200, and 2400 baud modems when the BBS changes to 9600.

Thanks to J&S Audio Video for being available on Saturday (and at Infomart) to resolve last minute connection problems with the VGA overhead projection panel.

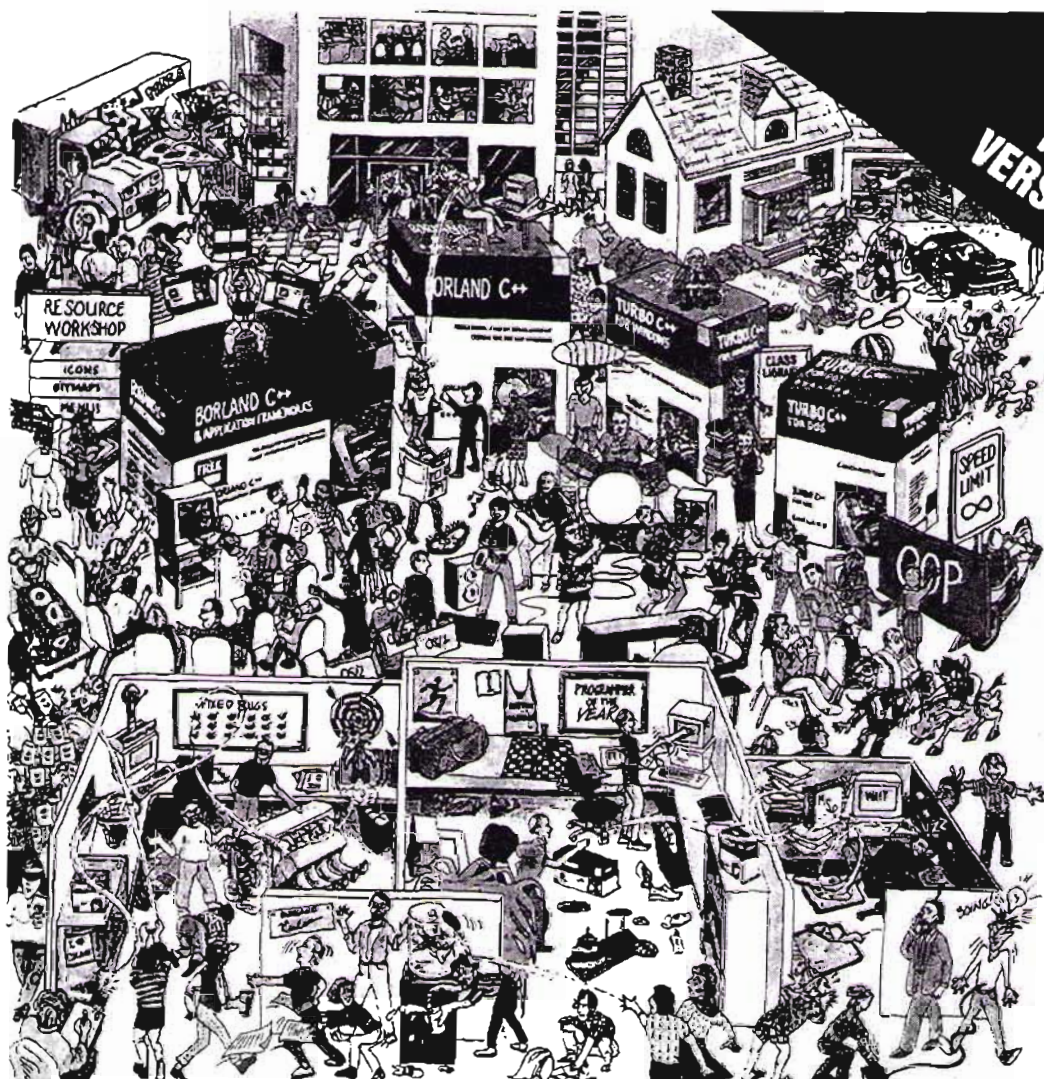
Andy Oliver

Cleaning

by Mike Firth

I thought I was doing a reasonable job of taking care of my computer, but recently, I was caught by surprise. Just a note in case to keep you from doing the same.

I have been using my mouse constantly and noticed that it felt a bit bumpy, which I credited to a dirty surface where I was running it. I have no qualms about opening it for cleaning but somehow never did that simple step. Recently, it was so flaky that I opened it and found a dark path around one of the steel rollers and on the wheel that applies pressure to the ball. When I started working on it, I was reminded mostly of getting the stuff out that wraps around the brushes of a vacuum cleaner. It took a bunch of careful work to get it off, but now the mouse moves on its pad smooth as silk.



From C to C++ Borland has what you're looking for

SUPPORTS WINDOWS 3.1

Borland C++ & Application Frameworks 3.1 sets the standard

For professional developers looking for the best development tools for C and C++ in Windows and DOS, Borland® C++ and Application Frameworks has it all. Application Frameworks dramatically reduce your development time. And the new version 3.1 gives you

| | WINDOWS | DOS |
|---------------------|---|----------------------------|
| Professional | Borland C++ & Application Frameworks \$749* | |
| | | Borland C++ \$495* |
| Entry level | Turbo C++ for Windows \$149.95* | Turbo C++ for DOS \$99.95* |

No matter what you need, Borland has a C++ for you.

SUPPORTS WINDOWS 3.1

Borland C++ 3.1 The professional C and C++

When you want the best in proven C and C++ professional tools, but don't need the convenience of application frameworks, Borland C++ is the right choice. \$495

Turbo C++ 3.0 is your starting point for C and C++

Whether you're just learning C, or know C and want to move to C++, Turbo C++ is easy to

full support for multimedia, TrueType, pen and OLE. Now in its third generation, Borland C++ & Application Frameworks is the award-winning choice of programmers worldwide. \$749

SUPPORTS WINDOWS 3.1

Turbo C++ for Windows 3.1 The fastest way to Windows programming!

Designed exclusively for Windows, Turbo C++ for Windows is the fastest way to program Windows applications. \$149.95*

See your dealer today or call 1-800-331-0877, ext. 5277 CALL NOW!

See below for free poster offer.

BORLAND

The Leader in Object-Oriented Programming

* Full-color poster in the above illustration is available for the asking. \$4.50 shipping and handling. Supply is limited. Call 1-800-331-0877. *Suggested retail price. All prices are in U.S. dollars. Dealer prices may vary. Copyright © 1992 Borland International, Inc. All rights reserved. Borland C++ and Turbo C++ are trademarks of Borland International, Inc. 9115088W

The Borland Trip

by Jim Hoisington

In late July, I represented the North Texas PC Users Group at Borland's 1992 Retreat for User Groups. Representatives from over 40 user groups worldwide were present. Some of the international groups represented were from Russia, Denmark, Iceland, and Australia.

The purpose of the retreat was to hear about Borland's plans for the future and to ask questions.

For some reason, Zack Porterfield was not asked to accompany me on this trip. Rumor has it that Borland obtained the Redmond, Washington police reports from our last trip to Microsoft. I doubt that this rumor is true since most of the incidents alleged in the police reports were never proven to have actually happened. Zack, we all missed you.

What follows are some of my notes of the four days of intense meetings and discussions:

Direction

A lot has changed at Borland in the last year. They have gotten incredibly organized. They now have a mission statement: "They want to produce ""Best of Breed"" (New Borland Buzzword) products in languages, databases and their tools."

They also have formalized their product plans. Each product manager that spoke to us could list each product development milestone through the end of 1993.

For the next ship point, the product managers had a formal list of features to be included in the product. For subsequent ship points, they had general goals that each product release was to meet. This is NOT the Borland of a year ago.

My impression is that Borland has grown up to be a mature software company that is positioning itself to be a major player in the market for sometime to come.

Philippe Kahn

Philippe Kahn came to speak to us on Wednesday evening. After a brief welcome, he opened the session (which lasted about 3 hours) to questions. As you might imagine, the user group representatives

had lots of good questions because of they hear so many good questions from their members.

One of the recurring questions was about the mysterious product that Borland is developing in Pascal to prove that Pascal is a viable product development language. Despite our best attempts to get Philippe to reveal the product, he wouldn't give us even a clue. (Our consensus, entirely without basis on rumor or fact, is that it is a Windows based word processor.)

Always the gracious host, Philippe answered most of our questions candidly and asked us some tough questions as well. It was obvious that he has been intimately involved in the restructuring of the company and is very enthusiastic about the way in which Borland is now approaching software development.

He really likes the "Best of Breed" buzzword.

dBase

Many of the user group representative expressed their members' concerns about the future of dBase, now that it is a Borland product. We grilled Philippe as well as the product managers about the issue.

Let me report to you that you will see several releases of dBase, both to the DOS and Windows products, through the end of 1993. Borland has committed a sizable amount of research and development money to the dBase.

Could they have done more? Sure. Should they have done more? I doubt it. Their plans for dBase are pretty ambitious. Anything more may have resulted only in unrequited expectations.

Paradox

Paradox 4.0 will ship when the manuals come back from the printers. It will probably be shipping by the time you read this. It was subjected to extensive alpha and beta testing. While they were waiting for the manuals, Borland offered \$50 to any of their Paradox technical support people who were learning the product for any bugs that they could find in the product.

Paradox for Windows is coming along and should ship this fall. It uses some new technology developed by the core technology group at Borland and still needs to go through some extensive beta testing before it will be ready.

In the future, look for other Paradox enhancements that will improve its connectivity with other products and environments.

Tour

On Thursday, we got to tour the Technical Support Building, the Production building and 1880 Green Hill Road (Borland's main building). Borland is building a new building in Scott's Valley but my guess is that by the time it's completed, they won't all fit into it.

The current technical support building is really cramped for space. The tech support people are really neat people and they need space to unwind after some of the tough support calls. Because of the special telephone system that they use to route calls, they really need to be in the same building. I hope that in the next year, Borland can afford to open a second technical support site on the east coast to ease the load on the current building and to lengthen the support day. (Nobody on the west coast wants to go to work at 5:00 a.m. which is 8:00 a.m. on the east coast.)

When you walk into the warehouse in the production building, the first set of pallets you see really surprise you. They are four pallets of Sprint Manuals. Does anybody remember Sprint? Borland still sells and supports it.

While we were at production, we watched them package 1000 units of dBase III plus. It still represents a sizable part of their sales of dBase products.

Other Products I can talk about

Quattro Pro for Windows has a ways to go. Don't expect it to ship this month. There is a 32-bit version of Borland C++ coming for Windows NT. They hope to ship it the same day NT ships. Their motto is "No Windows NT development kit required."

We asked about the Brief editor and the Version Control System that Borland just acquired. Borland will continue to ship them in their current versions while the products are being "Borlandized" (another new buzzword).

Still Another New Product Tami Casey, the Borland User Group representative is preparing to introduce her own new product sometime around the end of October. To assist her in this venture, the user group reps presented her with a baby stroller Saturday night along with our best wishes for a successful product introduction. (We're all waiting for the birth announcement on the APCUG Bulletin Board Tami.)

Quotes heard during the retreat:

"We will not ship any product before it's ready!"
... All Borland product managers.

"Ann stayed up all night printing Borland bucks on her laser printer"

... Brian Cragoe

"Who was Frank Borland?" ... Jerry Schneider

"I'll bet I'm the only person here with needlepoint luggage tags!"

... Sandy Frunzi

"Esther was online to CompuServe all night."

... Richard Katz

"Milt, we'd like to present you with this special user group award"

... Steve Bass

"Steve, what's in the box?" ... Shelly

"How do you play Black Jack?"

... Steve Longo

*"Is there a user manual?
(in reference to the stroller)"*

... Tami

"Do you have any chili's to put in the omelettes?" ... Somebody from Texas

"If that red sauce all over your eggs isn't ketchup, what is it?" ... Somebody NOT from Texas

"OOOOH!..... Ahhhhh!....." User Group Reps

"We certainly wouldn't want to do anything that might upset Bill!" ... Philippe

Nuff said— Jim ...

■

PS: Kent Kingery, I made it through the whole article about Borland without using the "O" word!

Disk-of-the-Month

The CATALOG disk : what's on it and how to use it.

by Kathryn Loafman and Mark Gruner

There are two questions frequently asked at the DOM Table:

"What is the CATALOG disk?" and

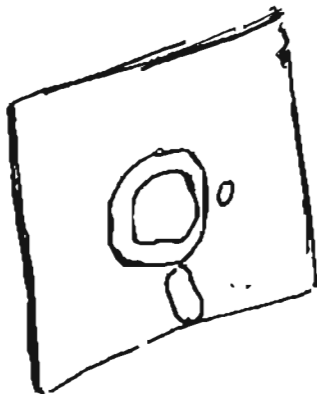
"How am I supposed to use it?"

The CATALOG disk is a way of browsing through the disks that are brought to the monthly meeting, so you can identify those that you would like to purchase. It contains descriptions of the disks currently available at the DOM Table, as well as the title and subject indexes.

Instructions on how to use the CATALOG disk are in the file called README. This is an ASCII text file that you can read online, print out, or import into your wordprocessing or spreadsheet program.

If you would like to read the README file online, put the CATALOG disk in drive A, and at the DOS prompt type:

```
TYPE A:README/p
```



If you would like to print the README file, at the DOS prompt type:

```
COPY A:README PRN
```

[We will use this COPY command later in this article. Each time we use it, remember that it assumes that the CATALOG disk is in drive A, and that your printer is connected to LPT1: (which is also called Parallel Port #1.)]

If you know how to use a wordprocessing program (or even a spreadsheet program), you could import the README file and then print it. Instructions for importing the README file into your wordprocessing or spreadsheet program will be found in the documentation for the program. (When you are reading the instructions, it helps to remember that an ASCII Text file is the same thing as a DOS Text file.)

The remaining files on the CATALOG disk are SELF-EXTRACTING archive files, named CATALOG1.EXE, CATALOG2.EXE and INDEX.EXE. — INDEX.EXE contains a subject index, a title index, and a cross reference index. — [NOTE: If you got your CATALOG disk August 1992 or earlier, this file is called INDEXxxx.EXE; where xxx are three letters indicating the month, such as: INDEXAUG.EXE.]

— CATALOG1.EXE and CATALOG2.EXE contain the README files for the disks that are currently available at the meeting. — [NOTE: As of August 1992, CATALOG1.EXE contains disk numbers below 600 and CATALOG2.EXE contains disk number 600 and higher.]

The contents of each SELF-EXTRACTING archive file will fit on one 360K disk. Do NOT try to extract these files TO the catalog disk, there isn't enough room. You can dump each archive file to a different 360K floppy disk, or you can dump all three to the same subdirectory on your hard disk.

How to extract an archive file to a floppy disk:

Put the CATALOG disk in Drive A and a formatted disk in Drive B, then at the DOS prompt type:

```
CATALOG1.EXE B:
```

and hit the <enter> key. Repeat for CATALOG2.EXE and INDEX.EXE.

How to extract an archive file to a subdirectory on a hard disk:

First create the subdirectory on your hard disk. Then use the same command as above, only there MUST be a trailing back-slash on the pathname:

```
CATALOG1.EXE C:\README\
```

The files contained in INDEX.EXE, CATALOG1.EXE and CATALOG2.EXE are ASCII text files. You could use your wordprocessor (or spreadsheet) to browse through the files, importing and printing out anything that looked interesting. However, if you want to go directly to the README you are interested in, you will first need to know the disk number. The disk number is used as the identification number for each disk's README file on the CATALOG disk. The fastest way to go to a particular README file is to know the disk number, and the easiest way to find the disk number is to use the index files.

Once you have extracted the index files from INDEX.EXE, you will find you have three files: XREF92.08, TITLE92.08, and INDEX92.08. The "92.08" part refers to the year and month the file was created (in this case, August 1992) and will change each month. TITLE92.08 is a title index, INDEX92.08 is a subject index, and XREF92.08 is a cross-reference index. Since these are ASCII text files, and you can print them out the same way you printed out the README file. Mark recommends that you print out the subject index, INDEX92.08. To print the subject index, make sure that you are still in the directory where the files are and type the following at the DOS prompt:

```
COPY INDEX92.08 PRN
```

Kathryn, on the other hand, prefers to import the index files into a wordprocessor, and use the search feature to locate information.

Which ever method you use, look through the subject index for programs that you are interested in. Each program has a disk number next to the title. Look for a disk number that doesn't have "MAIL" next to it. ["MAIL" means that the disk is available only through Mail Order, and the README file for that disk number will not be on the CATALOG disk. Mail Order forms are available at the DOM table in the basement at the monthly meetings.]

Suppose that you wanted to read about Viruscan, a program that checks for viruses on your PC. You first look in the subject index and find that the disk number is 742. After decompressing the CATALOG2.EXE file you find that there is file for 742, but it is called 0742ABC. This is the right file, the "ABC" at the end of the number indicates that there are three disks for this program. ("AB" after the number means there are two disks, no letters means that there is only one disk).

You can then view the file on-line, print it out, or import it into your wordprocessor. You decide to print it out. You first double check to make sure that you are in the directory that contains the README files. Then you type the following at the DOS prompt:

```
COPY 0742ABC PRN
```

OK? See you at the DOM Table! 

| | |
|---|--------------|
| JULIA KELLY | 214/881-9538 |
|   | |
| COMPUTER RIBBON SPECIALISTS <i>Your Source For Computer and Laser Supplies</i> <i>Recycling Services Available</i> | |
| 1300 Summit Ave., Suite C • Plano, Texas 75074 | |



Reagan Andrews, Ph.D.

The Variety Store

A personal view of new or unusual hardware, software, and applications for IBM small computers and compatibles.

'The time has come', the walrus/judge said,
To speak of many things – of GUI's, Shredders,
Toilets and non-environmentally-correct windows

We're starting this month from the top – the Microsoft & Hewlett-Packard vs. Apple (or vice versa) story that broke in early August. In terms of impact on PC users in the future, this has to head the heap. Redmond celebrates while Cupertino mourns.

Hence top billing devoted to the saga. (Sorry I couldn't make "Cab-bages & Kings" work in the headline.)

But, it's not all over. There's still more to come in the next month or so, probably the last installment will be released one day after the *PC News*' deadline. Microsoft also isn't the only lawyer epic this month. Lotus really did beat Borland over the 1-2-3 issues, but media attention was composed mostly of yawns.

On the hardware side, deep price cuts continue, chip advances surge forward with Intel's announcement of the 66 MHz doubled 486, and about a 100 more vendors announced new notebooks/desktops, high-speed modems and FAX boards. Same old, same old.

Makes us wonder – what will be left for Comdex/Fall 92?

Microsoft hums happy tunes While Apple walls dirges

Microsoft received a welcome present in early August. Surprises continue to roll out of the San Francisco federal court headed by Judge Vaughn Walker as the Apple vs. Microsoft & Hewlett-Packard GUI suit wends its way toward final judgement.

Judge Vaughn, according to sources quoted in the August 10, 1992, edition of *The Wall Street Journal*, essentially stripped away most of the remaining Apple claims in the suit. Discussing his decision in

this round, the judge focused on the "trash can" icon debate in somewhat humorous (to almost anyone except Apple) comparison between the Macintosh icon, paper shredders, toilets and windows.

I've got to quote the *WSJ* article – the prose is priceless:

Judge Walker wrote that "the name 'waste basket' is not essential to this idea, for the icon could just as well have been a paper shredder, a toilet, a recycling bin, or perhaps, for the less environmentally fastidious, an open window."

Apple not happy with decision, May appeal 75-page ruling

The result of the 75-page ruling would appear to be that Apple's suit is, in fact, gutted. Both Microsoft and Hewlett-Packard officials are quoted as quite pleased with the judge's decision.

Apple hesitated to call the decision a significant loss, although company officers were obviously surprised and disappointed by the ruling. Apple may still appeal the decision,

Media pundits are still suffering from shock as a result of the April decision (reported here in May) but were quick to note that "look and feel" lawsuits may have taken a rapid nose-dive after significant and similar decisions already announced.

Were both Apple and Cringely wrong about \$\$\$?

NTPCUG members who heard Robert X. Cringely (*Infoworld* columnist) at a recent meeting may remember his estimates of a settlement in the suit. He thought Microsoft would finally pay Apple \$800 million to \$1.2 billion in the end.

Late in the day at the Advanced Programmers SIG, a grinning Cringely inferred that Apple had already incorporated an estimated additional \$800 million in their operating budget in anticipation of success in the suit. Cringely's wasn't the only

Variety

media voice whispering rumors of uncounted treasure to befall Apple.

Where does this unexpected turn leave Apple? Hmmm ... where does it leave Cringely?

Meanwhile, Borland loses 1-2-3 Menu copy suit -- Nobody apparently cares

Lotus won their suit against Borland for copying 1-2-3 menus in *Quattro*. Media response was pretty much "Ho-Hum."

What a difference a few years and some market share make. Even though Lotus won, general consensus is that it really doesn't matter given the market shifts that user demands for features have created. *Windows'* popularity hasn't helped Lotus much either.

Think I'm kidding? If you can get a copy of the *PC Week* August 10, 1992 issue, scan the lead story and the inside editorial "The Week in Review." Definitely not written by Lotus publicists. I would wager that Borland's PR (and legal) staffers will find something to blush about as well.

The case is interesting when contrasted to the Microsoft vs. Apple ruling above. The judge's comments even confused computer law experts who have been following the case for months. Don't worry, Lotus fans, Borland looked even worse (in terms of legal logic) in the article than either Lotus or the judge.

Impression garnered from media accounts was that Borland deserved to lose for such a

stupid defense. *Wall Street Journal* reported the decision as well, but not very enthusiastically.

Intel breaks speed barrier again 486/66 prompts PC, Heatsink and fan sales

Intel "dropped the other shoe" in August when it announced production and delivery of the new 66 MHz DX2 chip. The new king of the mountain may last a while.

Vendors already promise a new wave of PC's powered by the super chip, as heatsink makers rejoice. Compaq, Dell, DEC, Everex and even IBM are among the rush to make PC's with the new 33MHz/66MHz CPU chips available this fall.

Claimed as 30% faster than a PC with a 50 MHz 486DX at its heart, the new DX2 should capture the hearts and minds of power users (or pure speed addicts) who can't wait for the 586 (Oops, really meant "P5") machines to arrive.

Intel engineers are a trifle more direct with this series and media articles advise users contemplating the new DX2 chips to assure their motherboards were designed to make use of the increased speed. Users are also urged to remember heatsinks and/or fans to handle the increased heating the chips will create. (Heat vs. clock rate is a fact of life with MOS-based chip technologies.)

Should we wait for the DX2-50 MHz/100 MHz chips, or the 586?

Talking about "doubled CPU's" Cyrix to discuss Cx486DLC Upgrade chips in September

This is a "Plug."

Dallas' (or Richardson's) Cyrix Corporation will talk about doubling CPU speeds and upgrades for 16 and 20 MHz 80386DX PC's at the September DOS SIG Meeting.

Reason for this blurb? The technology Cyrix will describe may mean a somewhat longer life-span for the older hardware. (Older? Three or four years is "older?") Cyrix has announced CPU chips to upgrade early 386 CPU's with "doubled" 486 CPU chips (see "Variety Store" for August, 1992).

Although there's some media speculation that the chips really belong somewhere between 386DX and 486DX chips in terms of architecture and performance, the promise is exciting. Might mean an additional year or two of PC life for the older hardware.

If you want, you can blame *Windows* or *OS/2* for this.

Last of the hardware -- Texas Micro builds tanks

I would not want to go where Texas Micros thinks their PC's work best.

Texas Micro is a Houston, TX, based PC manufacturer that builds machines for environments that are downright "unfriendly" to most folks. They've recently announced a "Fault Tolerant PC" the FTSA PC that's designed to work, and work, and work, almost anywhere. ➤

Variety

According to Texas Micro, the FTSA PC provides data protection and fault tolerance comparable to that available only in minicomputers to date. The machines include backup power supplies and self-recharging battery packs, mirroring disk arrays and constant monitoring via Texas Micro's diagnostic system.

The FTSA PC's are compatible with NetWare and LANtastic and feature a Mean Time to Repair of 10 minutes. Texas Micro can be reached at (800)-627-8700.

Is this finally too much? After Dark now features Tribbles, "Final Frontier"

(This is all the software there is for this month. Blame upcoming Comdex if you wish.)

Berkeley Systems announced they had acquired selected *Star Trek* licenses for their premier screen blanking utility, *After Dark*, in August. The resulting new utility will be named *Star Trek, The Screen Saver*.

According to Berkeley Systems, the new suite will be based on Paramount Pictures *Star Trek*, and will feature all the characters, creatures, alien life forms and sounds from the popular (original) TV series. That includes Tribbles, Klingon warriors, Romulan vessels and the transporter room.

Berkeley says the new screen blanker will be released in October, 1992.

If you believe this ... Marketing "Pan" this Month goes to ... Apple

Don't know if this has anything at all to do with Apple's unsuccessful raid on Microsoft's coffers. I know it has something to do with *Windows'* encroachment in formerly sacrosanct Apple graphics territory.

If you read computer magazines, you must have seen the latest series of Apple Macintosh vs. *Windows 3.x* ads. As a (former) student of propaganda (and other PR & advertising techniques), I've found the Apple ads quite interesting -- and dangerous.

They are certainly well done. Good graphics, straight-forward copy that tells Apple's story directly and -- dishonestly. They're good. The problem is, they infer ("promise") a lot that flat isn't fact. 'Course, I'm picky, and no Apple fan since the introduction of the first, "crippled" Macintosh with a caveat that if the user opened the case, the warranty was void.

Apple uses a lot of "half-truths" to make their point. As a Macintosh IICx user, I know. (Have to confess here -- I use both Macintoshes and PC's.)

Apple makes a really big thing about PC users having to buy "special" *Windows* software to do graphics, more memory, bigger color monitors, etc., etc., etc. Really expensive.

Problem is, you have to do exactly the same with the Macintosh. PC users will discover

that most software for the Macintosh replicates PC features -- and costs approx. \$100 more per package. Almost anything with an Apple logo costs more, much more, than for a PC.

Get "real" Apple.

History and nostalgia -- August NTPCUG meeting

Another *Windows* lament (for Leroy ...)

The following anecdote came from a quick trip to the PC flea market during the August meeting. I broke down (*Windows 3.1* inspired) and bought 16M DRAM -- four, 4M SIMMs -- to take my home PC from 8M to 20M.

Paid a little less than \$500 for them, tax included.

Made us think back some. We bought our first PC (after attending several meetings of the North Texas PC Users Group at SMU) in March, 1983. Our original PC was an IBM-PC (1) with a 64K motherboard.

The salesman argued that we really wouldn't need the additional 32K needed to fill the motherboard, but he would sell it to us for \$200. He couldn't think of any reason we could possibly use the motherboard's full 64K capacity! (That was before *Lotus 1-2-3* really hit the market, of course.)

In 1983 prices and dollars, the same memory I bought at last August's meeting would have cost \$100,000.

Reagan a

IF YOU WANT TO GET TECHNICAL...

BOOKS ON

C++ • UNIX • QBASIC • PAGEMAKER • EXCEL
ALDUS • AUTOCAD • DB2 • CADD • LAN • OS/2
WINDOWS • QUATTRO PRO • DAC EASY • LOTUS 1-2-3
dBASE • PARADOX • Q&A • ORACLE • WORD PERFECT
VENTURA • DOS 5

AND MUCH MORE

...TAYLORS TECHNICAL BOOKS IS THE PLACE TO DO IT.

TAYLORS
TECHNICAL
BOOKS

TAYLORS TECHNICAL BOOKS, Second Floor, 5455 Beltline Rd., (214) 239-TECH
Monday-Saturday 9 am-9 pm, Sunday 12 Noon-6 pm

CELLS & RANGES

an eclectic collection of spreadsheet information

by Betty Brooks

Accessing Information from Databases Using DOS Spreadsheets

This month's article will discuss accessing data from a Paradox or dBase file while you are in a DOS-based spreadsheet. Next month, I plan to discuss how to access the data from Paradox for Windows while in your Windows based spreadsheets. I have a definite preference for Paradox as my database program and have not used dBase, so some prejudices will probably show up!

Lotus Development produces several different versions of spreadsheet products. Some of these products, like 1-2-3 3.1 and 1-2-3/W, have external database access drivers (DataLens Drivers) included which allow you to do queries and related work on the database files by using /Data External commands to create the links. Symphony has an add-in, @Base, included which allows access to dBase files. Although I do not plan to go into detail on using @Base in this article, you will find that the techniques for data access are similar. If you want to access dBase files from 1-2-3 2.x, you can purchase a version of @Base from Personics (508-897-1575) which will do the same type of functions, but only on dBase files. There is an add-in called @SQL for 1-2-3 2.x which is available from Lotus that allows database access to SQL databases. Lotus and some outside developers have created DataLens drivers which allow 1-2-3 3.x, 1-2-3/G and 1-2-3/W to access many different databases. Some of them are available from the individual database companies such as Oracle and will cost extra. Others such as the dBase and Paradox drivers come with the 1-2-3 product when you buy it.

Lotus is working on 1-2-3 3.4, which is expected to ship by the end of this year. This new version will feature new DataLens drivers that will be more efficient and faster. There will be a real driver for accessing dBase files (instead of the Sample driver now in current versions) and a Paradox driver which will access Paradox 4.0 files. The new dBase driver will support indexing and will be able to read and write the dBase files.

The following is a quick refresher on database structure in the spreadsheet environment. Both 1-2-3 and Quattro Pro use the same features. A field name is the label that identifies the contents of each field. For example, in the database I am using, Name, Address1, City, and State are some of the field names. You will need a row with a field name typed into each of the cells. In fact, you need copies of the field names on two separate rows. One of these rows will serve as the output range, under which the data from a query will be placed. You should not have any other data under the output row because it will be erased during the query operation. You can create a restricted output range by designating the row of field names and the desired number of rows below as the output range. The problem with doing this, is that if there are more records meeting the criteria than there is room for in the output range, you will not get all the records.

In another area of the spreadsheet the second copy of the row of field names will be used to create the criterion range where you will be able to place search criteria that will cause the query to have whatever restrictions you designate. When there is criteria in this range on the row under the field names, your output from the original database will only include the records meeting the criteria. Since this article is about using external databases you will not find the database on the spreadsheet. You will need to designate the input range, but with the external database access, the database itself is not on the spreadsheet. If you have trouble with the concepts of the output range and the criterion range, you will need to look for some of the examples in the manuals as these particular aspects are well documented and would take another whole article in itself to explain.

The manuals that come with Quattro Pro and 1-2-3 3.x dedicate some space to walking you through the techniques for accessing external databases. In case you are looking for some additional information, Lotus and Borland have support on CompuServe as well as other types of support. Lotus Product Technical Marketing has written some good tech notes on using the database features of 1-2-3. To get a free copy of "Efficient Database Reporting in 1-2-3 Release 3", call Veronica Ward at 617-693-1571 (or 693-1606 - Elana Fernandez if you have trouble getting through to Veronica). Be sure and leave a clear message spelling your name and address and the name of the tech note so the correct one will be sent to you.

If you have a fax line, you can also take advantage of the Lotus Fax Support by calling 617-253-9150 and ordering the tech notes which might help you with questions. You will first want to call and order the catalog for the product you need help with such as catalog #2 for 1-2-3 3.x notes. In that catalog you will

find a list by categories of the different tech notes available, some of which are related to database access. After trying this fax service today, I would highly recommend it as it was very fast ... I had barely hung up the phone when the fax line rang and started delivering my requested tech notes.

Borland has fax tech support which can be reached by calling 800- 822-4269. You can get a catalog by choosing the applications branch in the initial menu. There is a document (#610) which relates to Paradox access from Quattro Pro which you may want to order, too. This document on database access is how to use the Paradox Access features that allows you to run Paradox while using Quattro Pro which is not being covered in this article. The turn around time from my initial phone order until the fax arrived was just as quick as Lotus' ... almost instantaneous! I had never tried either of the fax support lines until writing this article and am very impressed with the number of tech notes you can get to help with various problems related to the products that Borland and Lotus support. If you have access to a fax machine, you ought to try getting their catalogs.

Since Borland sells both dBase and Paradox their spreadsheet products have the most flexibility in database access. You can start a Paradox session while in Quattro Pro or do a /File Retrieve, name the database file with it's extension and the database file will show up on the spreadsheet (as long as it has less than 8192 records). Alternatively, you can set up database criteria and output areas and use the /Database Query menu using your external database link to bring in just selected data. The latter method is the most common and useful function of database access, since usually you will only need certain parts of the information in the database to help with the data you want to manipulate in the spreadsheet.

One of the first things you would need to know would be the field names of the external database. Quattro Pro allows direct access without any other drivers. All you need to do is find an empty row in the spreadsheet and enter a linking formula that points to cell A1 in the database. I know, there is no such thing as a cell location in a database, but this is how Quattro Pro is looking at each of the rows in the database file. Of course, the first row in the file would be the field names. An example of this formula would be:

```
+{NAMES.DB}A1
```

where NAMES.DB is the name of the Paradox data file. You will see the first field's name appear in the cell where you entered the linking formula. Next, you will want to copy this formula across the row to as many cells as you think there are fields in the database. Once you have copied the linking formula, use the /Tools Update Links Refresh menu com-

mands. You will then see that the row contains the names of each of the fields in the external database.

At this time, you might want to change the column widths of the fields to match the sizes needed by each field. Next you will need to use the menu commands: /Database Query Block to designate the database file, which will be the input block. In my example, I would type in [NAMES.DB]A1..A2 which tells Quattro Pro to look on the current directory for a Paradox database named NAMES.DB. The A1..A2 syntax is just a way to designate a block of at least two rows. The location is not important because Quattro Pro is using it for syntax purposes only. This will create the necessary link to the database which allows you to do a /Data Query Extract to the output range (once you have used the menu to designate the location of the output block and the criteria block) from the external database.

1-2-3 3.x requires that you load the DataLens driver (ParaLens in this case). Start the process by using the /Data External Use menu commands. Next highlight ParaLens, press ENTER and then indicate the directory where the database files are located and press ENTER. You will then be presented with a list of the Paradox database files located in the directory, so highlight the appropriate one and press ENTER. You will be prompted for a range name to use as the database's name (an alias). It is easiest to just press ENTER to accept the default, which is the same name as the external database. Of course, if you already had that range name somewhere on the spreadsheet, you would need to create a new name. (This range name is what you will use as your input range for the /Data Query commands).

After indicating the range name the menu will reappear and you need to choose the List Fields commands. At the prompt, indicate an empty space on the spreadsheet where the names of the fields, field types and other characteristics will be placed in the form of a table. Once you have the list of field names, you can use the /Range Transpose command to place the list into a row of cells in the spreadsheet for the output range. Then make a second copy of this row of field names for the criterion range. You can use the field widths indicated in the original database description table to make each of the columns in the output range the correct width for the data. At this point, you would be ready to do a /Data Query Extract command to get data from the external database into the output range. If you leave the criterion blank you will get all the records in the database.

The following is a note of warning to stop you from making the same mistake I made in 1-2-3 when trying to connect to the external database. When the prompt asks for the name of the database table after

you have indicated which DataLens driver to use, only indicate the name of the drive and directory, not the database name. After reading some of the information in a text file with the drivers, it was easy to misinterpret the correct syntax for the input at the prompt. They were talking about databases and tables because in some database programs a database contains several tables. This is not the case in Paradox and dBase which use the terms interchangeably. The DataLens drivers are looking for information on the table, which comes at the next prompt after the directory prompt even though the prompt seems to indicate otherwise. If this is confusing to follow, so is the prompt that shows up in the 1-2-3 menu! Just remember to input only the directory (including drive if needed) when it asks for the table name.

Both 1-2-3 3.x and Quattro Pro allow you to create new database tables, modify and update the data in records of the databases. You can create output ranges for more than one database on the spreadsheet which allows information from multiple databases to be queried and extracted. Once you have made the links to the external databases, you will be able to use all the database functions of the respective spreadsheet programs just as if all the database information was part of the spreadsheet. This means you are able to use the special database @ functions, too. By making use of all the special spreadsheet functions and features, you will be able to manipulate the database information to create all types of reports, graphs and other useful analytical scenarios.

1-2-3 3.x allows you to create computed fields in the output range which will create a "new" field using the database information. For example, the database might include fields named PRICE and AMOUNT and you need to create a new computed field by multiplying price by amount to get the extended price. In the field name cell of the output range where you want the extended price, you would place PRICE*AMOUNT as the field name. When you do the /Data Query Extract, this field will be computed by using the data from the price and amount fields for each record and placing the result in the new column. Relational database joins are also possible in 1-2-3 3.x as are aggregate columns which work like the computed field.

Next month, I will tell you about a tech note you can get from Lotus that provides additional information on how to do these things. 1-2-3 3.x has many database features which allow all types of manipulation like a crosstab which allows more than two inputs. Look in your manual for more information on how to do these special joins and other powerful manipulations.

To do a computed or aggregate field in Quattro Pro you will need to use the Paradox Access to go into Paradox and do the query, then come back to Quattro Pro and use the ANSWER table as your source database. One of the things I found in the Quattro Pro manual that really did not need to be done the way it is shown, is setting up some of the criteria. The examples showed linking formulas in the criteria range, which is sometimes more than is really needed.

For example, I wanted to pull out all the records with the state "TX" in the ST field of my NAMES.DB table. By following the syntax in the manual, I typed in:

```
+{NAMES.DB}ST="TX"
```

under the ST field name in the criteria range. When I did the /Data Query Extract I got all the records I wanted plus the records with a blank ST field. Next I tried a compound formula to create a criteria formula that excluded blanks:

```
+{NAMES.DB}ST="TX"and#@cell("type",{NAMES.DB}ST)<>"b".
```

This made a long formula, but it worked. I then tried typing "TX" (without the quotes) into the cell of the criterion range instead of the linking formula. This also brought over only the TX records. So, you may not always need to use a linking formula in the criterion range. This was not evident by reading the manual, but makes sense when you are familiar with how database criteria work with regular spreadsheet based databases. Keep this in mind when you are trying to create your own criteria. It might save you some time and effort. Also, in the circumstances where you do need to reference the field name as part of the criterion formula, remember that the proper syntax for the field name **always** includes the database name within square brackets just in front of the field name.

Hopefully, I have given enough information to get you started with database access and have shown you where to get additional help and information to learn the details that couldn't be included in the limited space of this column. Next month there will be a lot of information to cover in the column on Windows spreadsheet/database access. These programs offer a lot more than is possible in the DOS spreadsheets and are fun to use.

Betty

▲

Betty has a spreadsheet and database consulting business called Records & Ranges. She can be reached at 214-618-1608 (4312 Bragg Place, Plano, TX 75024) if you have any questions or suggestions for this column.

What you see is not always what you get!

Anon from Utah PCUG via Silicon Valley Computer Society Journal.

A person died and, entering heaven, met St. Peter. St. Peter said, in the interest of fairness, we want to give you the option of staying here in heaven or going to hell. You can look around here for a few minutes, and then go visit hell for a while before you decide. The catch is that your decision is final. You can't change your mind.

So they toured heaven for a short time and it seemed a little on the boring side to remain there for the rest of eternity. People were playing horseshoes, bridge, and drinking tea. It wasn't bad, but it did look like it could get old after the first couple hundred years or so. The person asked St. Peter for a look at hell before making a final decision.

The gateway to hell had two huge red doors with Inferno emblazoned upon them. Expecting the handle to be hot the person quickly pushed the doors open. Surprisingly the handles weren't even warm and a cool breeze wafted from the open doors. On the other side people were eating, drinking, dancing, and generally having a pretty good time. This seemed to

be easier to take for eternity and upon returning to heaven the person told St. Peter that he had decided on hell.

Once again the person stood in front of the red doors. Pushing on the handles a smell of burning flesh filled the air as the handles were blisteringly hot. On the other side was a wall of flame with screams and moans coming from the depths, the person stood there incredulous. The devil appeared and asked if there was some problem. The person replied, I was just down here 10 minutes ago, it wasn't hot, and people were having a great time! What happened!

Well, the devil replied, that was a demo.



Membership Application

North Texas PC Users Group, Inc.

The NTPCUG is a non-profit independent organization of individuals learning to apply personal computers to practical problems. For additional information, call (214) 746-4699.

Member # _____

Name: (Last) _____ (First) _____

Address: _____

City: _____ State: _____ ZIP: _____

PHONE: (Check Preferred No.) Home _____ (_____) Metro? Y ___ N ___

Work _____ (_____) (Ext) _____ Metro? Y ___ N ___

Occupation/Profession: _____

| Check one from each column below | | |
|----------------------------------|----------------------------|----------------------|
| Payment: | Membership Classification: | Application Status: |
| Cash _____ | Regular (\$24.00) _____ | New Member _____ |
| Check _____ | Student (\$16.00) _____ | Renewal _____ |
| Credit Card _____ | (full time with ID) | Address Change _____ |

Applications should be mailed to: North Texas PC Users Group, P.O. Box 780066, Dallas, TX 75378-0066 (Make checks payable to NTPCUG)

Please initial here _____ if you do not wish to have your address included on member lists sold for the NTPCUG's benefit to advertisers of IBM compatible products.

Selected SIG HAPPENINGS

News and meeting notes of Special Interest Groups

(Material for this column should be sent to Paul Williams, SIG Coordination, before the 10th day of each month)

Alpha Four SIG

Because of a typo and the unusual timing of the deadline for these PC NEWS articles, our August article mentioned Fred Williams presenting a program in June...this, of course did not occur. We just thought we would let you know that we are not "out of it" nor even "full of it."

Due to some scheduling problems Fred Williams did not start his program until our August meeting. He will continue his presentations at the September 12th SIG meeting. Your SIG leaders will then begin discussion on "linking" databases...a procedure covered in ALPHA FOUR under SETS.

This plan is a result of SIG members' requests. Remember that this SIG is for the ongoing interest and education of us all. We definitely want feedback on the programming. Our informal canvassing during the last two meetings produced some interesting facts. Most of us are non-professional computer users and are using ALPHA FOUR for some personal use. Some use ALPHA FOUR in business pursuits. And regardless of the reason for your use, our individual experiences with this program range from just a few months to those who have used it since it was ALPHA THREE. Over time, I am sure that we will all greatly benefit from the exchange of knowledge and experiences.

See you in September!

Lloyd McKethen

Beginner's BASIC SIG

At our August 8th meeting, we discussed simple report writing, strings, numbers, and print using. As usual,

we presented a short program that uses and illustrates the use of a variety of commands that relate to the subject matter. All the program examples we give can be used in GW-Basic or QBasic, and can even be compiled in QuickBasic. Next month (September), we will discuss Computer Disk Files.

Chuck Jacobus

Visual BASIC SIG

The Visual Basic SIG got off to a great start with 18 attendees at its first official meeting in August. The 9:00 AM starting time met most attendees' schedules and we hope the SIG will grow as the activity grows.

Woody Pewitt introduced himself as SIG Leader and I will serve as Assistant SIG Leader. Much of the meeting consisted of Q&A amongst the participants to get a feeling of what the goals for the SIG should be. The format for the SIG meetings will consist of a 30-minute "lecture" on a specific topic followed by Q&A to help members solve problems they are encountering with Visual Basic.

Visual Basic is a language that is used to write programs for the Windows environment. The traditional programming tools for Windows applications have been C and the Windows Software Development Kit (SDK). These tools are extremely complex and difficult to use. Visual Basic, operating in Windows, provides a more powerful programming environment for developing significant Windows applications. The fact that Visual Basic operates in Windows permits applications to be written, tested, revised, retested and compiled within Windows.

Next month, Frank Cavallito will present a lecture on Dynamic Link Libraries (DLL) and we will have more Q&A for your Visual Basic problems.

I hope to see you at 9:00 AM on September 12.

Jim Carter

Business Applications/DAC Accounting SIG

The August meeting of the Business Apps/DAC Accounting SIG was a demonstration of "The Complete Communicator," a communications package, including hardware & software, which provides multiple modes of computerized communications. It's a 2400 bps modem, 9600 bps send/receive FAX, & E Mail system that will provide very sophisticated phone directory management. The only major drawback is it's limitation to a single phone line. A great message manager for a sales or service business with people on the move!

Thanks, Bruce, for a fine demonstration.

For September 12, we've scheduled a demonstration by Randy Rice. Randy has come up with a not-so-well-known, DOS based, desktop publisher, "Avagio v 2.0," with a suggested retail of \$149.00, and a street price of less than \$90.00! We may see the demo output to an Inkjet printer but the publisher, Unison World Software of Alameda, CA, claims support for a wide range of dot matrix printers, as well as all popular laser printers.

A DOS based desktop publisher at this price is worth a serious look. I'll be there and hope you will be, too. We will have a drawing for software. You must be there to win!!!

Putt Shaw

Beginners C SIG

First I would like to thank Chris Baltrop for taking care of the Beginners C SIG in July while I went on an ill-fated vacation. In August, we discussed a subject that receives little attention in most books that purport to teach C. The subject was "Scoping Rules for Variables and Functions." When scoping is understood, a knowl-



edgeable C programmer can exercise the scoping rules to tie together a C program that consists of several C source files.

In September, we will continue our survey of the C language and cover structures in C, including their benefits, and their pitfalls.

In October we will revisit pointers and discuss how they may be used with structures and dynamic memory allocation, to create linked lists.

Finally, in November we will cover advanced file I/O and survey the plethora of functions available in the C language for manipulating files. We will also discuss file I/O through Standard Input, Standard Output, and Standard Error Output and how these can be manipulated through file redirection.

I would like to close by saying I have developed a C TOOLBOX that I intend to share with all interested parties through the NTPCUG DOM. Thanks to all of you who made contributions and suggestions!

Stan Milam

DOS SIG

Cyrix will be at the September DOS/Hardware SIG Meeting.

That's right. The DOS SIG and the Hardware SIG will meet together in September. It's a doubled SIG meeting for a doubled chip.

If you've been reading PC media over the last six months, you know "doubled" CPU chips running (internally) at twice the motherboard clock speed have taken the PC world by storm. First, it was Intel's DX2 chips, now it's Cyrix's Cx486DLC chips.

Cyrix has a twist of considerable interest here, though. They will discuss the new generation of chip replacements that give doubled 486 capabilities to 386 PC's. Initially, chips will be available for 16 and 20 MHz 386 slots with a 25 MHz (and probably a 33 MHz) CPU chip to be announced later this year.

Cyrix will present the new series and explain how they will work on typical users' PC's as an alternative to replacing the motherboard and memory. This should be an outstanding meeting and answer a lot of questions raised by PC media accounts of the technology and proposed pricing.

So, why a combined DOS/Hardware SIG meeting? Mostly, 'cause a lot of the questions we've been answering (sometimes out and out lies) have to do with the interface between DOS and the hardware it runs on. This is a chance to be forewarned and armed.

The combined DOS and Hardware SIG meeting is planned for Infomart's 5006. Check the BBS for more details as the meeting date looms closer.

Reagan Andrews

Personal Users SIG

This Special Interest Group (SIG) is for you!... if you consider yourself any of the following: ... a novice... a new PC owner... a beginner with PC's... a person curious about PC's... a soon-to-be PC owner... a personal (versus professional) PC user... or... a PC user needing to review some "fundamentals."

We offer sixteen (16) individual, stand-alone classes covering the "fundamentals of personal computers." Four classes are offered at each monthly meeting of the North Texas PC Users Group (2nd or 3rd Saturday on the 7th floor of the Infomart in Dallas). After four monthly meetings (covering four classes each), we take a month off and then the entire 16-class curriculum is begun again. The classes are presented in numerical sequence, but you can take them in any sequence convenient to your personal schedule.

The classes always start each month (except our month off) at 9:00 am, 10:00 am, 12:00 noon, and 1:00 pm. Since each class is a "stand-alone"... i.e. self-contained and NOT requiring any other classes as prerequisites... you can begin attending at any time convenient to your other priorities and schedule. In addition to receiving informative instruction from people very knowledgeable in their field and class topic, you also receive a set of handout notes for each class, to allow

you later review. There are no homework assignments, no pressures, no tests, and no dumb questions. You don't even have to be a member of the NTPCUG before you attend... ALTHOUGH YOUR ARE ENCOURAGED TO JOIN NTPCUG AND VOLUNTEER YOUR TALENTS.

This 16-class curriculum of PC fundamentals is specifically designed to be the kind of learning experience you always wished existed... where you are accepted just as you are, and where you can gain knowledge without the hassles... and best of all... the classes are FREE!

Join us as we learn and review "THE FUNDAMENTALS."

The four classes for September 1992 will be:

| | | |
|------------|------------|--|
| 9:00 am | Class 9.2 | Genesis & Overview of Computer Languages |
| 10:00 am | Class 10.8 | NTPCUG Disk of the Month (DOM) Library |
| 12:00 noon | Class 11.2 | PC Graphics Modes |
| 1:00 pm | Class 12.2 | Bulletin Boards & Archiving Programs |

Bob Presley

Advanced Programmers SIG

Pete Testa won the PRO SIG contest for the most lines in a CONFIG.SYS file, replacing last years winner, Andrew Chalk. When asked how he did it, Pete replied, "I always let every software package I install modify my CONFIG.SYS." Congratulations Petel

Jim Hoistington

Quicken SIG

I jumped the gun on the new room: we're back to the usual room on the 7th floor at the end of the hall. But with a portable computer to project the Quicken software through the overhead, one can see actual entry of information onto a sample check, the interaction with categories and sub-categories and follow the demonstration easily. I'm going to give Bill Minder another try; imagine being reminded of when one's auto safety sticker is due for a change.

In September, Billy is going on to discuss investments. There are always some questions of how to treat the



various types of investments and Quicken handles mutual funds especially well. The nightmare of accounting for dividend reinvestments at sale time is resolved into an averaging of cost or separated into long or short time periods.

Doug Gorrie, the communications man, now has a column called TBBS Questions & Answers which offers information on using the BBS. Good advice for those who are having problems and also better ways to manipulate the software.

For those of you who have asked about reference books on Quicken, there are three in the Infomart Bookstore. This is a very quick perusal in-between SIG sessions and DOM volunteer activities, but perhaps some of you can recommend a reference to the SIG.

EASY QUICKEN: has to be good if it's published by QUE.

PC COMPUTING GUIDE TO QUICKEN 5.0: by Michael E. Kolowich with a foreword by the founder/president of Intuit. Naturally, I had to look into this one in more depth. How about tracking your business auto mileage? Create a new file, a cash account, and let the balance equal odometer miles. With two types of income categories (business & personal) you have clear reports of totals of mileage for business and personal use. This is an example of the special applications in this book.

QUICKEN 5 MADE EASY: includes Quick Pay and how to set up Accrual Accounts, but appears similar to Quicken instruction manuals.

Bring your Q's for the rest of us to A; Billy always allows for questions. And if you have an interest in the Windows version or Quick Books, let us know. We find very little use of either of these and will not spend time on the subjects unless we hear differently.

Jo Johnston

Paradox SIG Spreadsheet SIG Spreadsheet Developers SIG

By the deadline for this column, the plans have not been finalized, but plan to come to these SIG meetings in hope of seeing how to use Borland's newest products.

The plans include showing Paradox and Quattro Pro for Windows working together, plus some demonstrations on how to use DDE, OLE and the dialog box creator, etc. This should be a very interesting program for all levels of database and spreadsheet users. The Paradox SIG meets at 10 am in the same room as the Spreadsheet Developers SIG which meets at 11 am. The Spreadsheet SIG meets at 1 pm. Plan to attend these SIGs in hope of seeing the new products and how to use them.

If these plans can not be accomplished at the September meeting, we hope to do it in October. The Spreadsheet Developer's SIG will have Mark Gruner show how he created a macro in Excel from the same macro in 1-2-3.

The Spreadsheet SIG will have a "Bring us your Problems Day," so please come armed with your questions and problems about using spreadsheets to the meeting. Of course, if the Borland demo works out, we'll do the problem solving in October.

Betty Brooks

Unix SIG

Fortunately, the timing of this month's meeting is such that we can describe what actually happened at the last meeting, as opposed to peering into the future.

There was a good discussion on the various new or soon to be released versions of Unix from several vendors. Some performance related information was also discussed with comparisons in different areas. It was obvious from the test results discussed that compiler design many times has more to do with performance than the actual speed of the system.

An opportunity to help in the testing and development of a version of Unix for the PC has come up and several members of the group expressed an interest in helping.

Next month we are planning to begin a discussion on the basics of Unix. It's history, structure, and usage will be our topic for the next several months. With one exception.

Informix Software will be discussing their 4GL and spreadsheet products at the October meeting. This should be an interesting presentation and I encourage anyone interested to join us in October.

Jim Stallworth

Word SIG

Heard recently from a beleaguered editor - "I'm so sick of Helvetica (and Swiss) I could scream."

Does that mean word processing's two "favorite" font standbys - Times Roman and Helvetica - may have been a trifle over-used? Is Palatino running a close third as a result of PostScript's growing popularity?

And, what does this have to do with Word? Easy. Each succeeding version of Word for DOS and Word for Windows has included increased type-handling power. Discussing fonts is an easy way to lead into Word for Windows 2.0 and benefits reaped by upgrading to Windows 3.1 and its TrueType capabilities. It seems to be the logical follow-up to the August Word SIG's focus on simple page layout, font sizing and column usage.

We'll look at Times Roman and Helvetica (and their Bitstream equivalents, Dutch and Swiss) and economical TrueType alternatives that may do a better job for the user in many applications. FAX presents a special case - transmission of low-resolution documents. Selecting type faces and sizes suited to this media confronts the Word user with new dimensions we'll explore.

That means we'll be talking about weight, color and all those other, formerly arcane, **type attributes** that can mean the difference between a "nice try" and an **outstanding** document.



As usual, the latter portion of the Word SIG Meeting will be devoted to SIG members' questions and problems implementing Word's powerful features in day-to-day work.

Reagan Andrews

Works SIG

The primary topic of the July meeting was features of the database section of Works. Additional questions were

answered, including "what is part of the 5%" when I say that "Works provides 95% of what most people need."

The database in Works provides four ways to get information out: standard and modified form and list; and cooperates with the Word Processing section for two more: form letters and labels.

One topic I blew in the meeting was how to do more than one test in a Query. It turns out the special symbols | for OR and & for AND are used to combine tests: In the Age

field =<18164> tests for kids and old folks.

The August meeting was hosted by Ralph Logan, the designated backup, who agreed after I got the chance to take a class for two weeks, ending the day before the meeting. Ralph did a great job of creating materials that show how to do a mail merge and label making. For September, we hope to have an overhead working and show how to get graphics out of the spreadsheet.

Mike Firth

Picture Wizard from Arts & Letters

A Software Review by Kim Oliver

From apples to zebras, and everything in between, Picture Wizard by Arts and Letters has it. This program is "for kids of all ages" (and that includes all of you adults out there who won't admit you're still kids). This program is fun, easy-to-use, and has something for everyone.

Picture Wizard is not difficult; after all, it is geared toward use by children. It is a Microsoft Windows application though, so basic Windows skills are needed. These skills include using a mouse, using scroll bars, pulling down menus, choosing commands, and using dialogue box controls. This may sound complicated to those of you who are not familiar with Windows, but you will get used to it. After a few practice sessions, you get very comfortable with this program. The instruction book is also easy to understand. If you like to know what you are doing, and want to find out certain things on your own (like me), you'll have a lot of fun with this program. If you like to know exactly what you're doing before you begin, you will find the instruction manual and on-line help easy to comprehend.

Picture Wizard also has many unique features. It contains over 1,000 detailed and accurate pictures and symbols. You can manipulate these symbols by sizing them, changing their color(s), flipping them,

rotating them, duplicating them, and putting as many pictures on a page that you want. This program also allows you to create many projects. These include the following:

- Banners
- Greeting cards
- Coloring pages that you can print out in black and white and color
- Christmas ornaments
- Stationery
- Puzzles (mazes, word finds, etc.)

This program is great to keep children busy for hours. It can also be useful to businesses - both big and small, day cares, and schools. Although this program has many features for kids, they are for "kids of all ages" (it even says so on the box). I thoroughly enjoy working with Picture Wizard and I highly recommend it to anyone who likes to have fun. And if over 1,000 pictures on this program are not enough, you can always get Arts and Letters' Apprentice or other Arts and Letters libraries to obtain the over 15,000 pictures in the complete Arts and Letters clip art collection!

Kim

(Kim is the 14 year old daughter of the NTPCUG president Andy Oliver)



Inside the North Texas PC Users Group Community

Connie Andrews

As I write this (Aug. 10), we have just had our first 100 degree day in Dallas this summer. Seems to me this is a milder one than most. As you read this, though, we'll be into September - traditionally a busy time for us.

So, it's time for you to think about contributing an hour or so of your time to the group to help out at our meetings. We have lots of room to add you to the list of illustrious volunteers whose names follow. Plunge in, those of you who haven't helped before. You'll be glad you did.

In this issue we are acknowledging volunteers who served for the month of JULY. In addition to those listed below, our officers, directors, SIG coordinators and leaders, newsletter publisher, editor, staff and writers, newsletter exchange, and BBS SYSOP and staff are all volunteers; their names are listed in other sections of this newsletter.

PLEASE remember to say thanks to our volunteers!

INFOMART Liaison
Stuart Yarus

Vendor Setup/Breakdown
Anchors:
David Slavik
Frank Dorer
Crew:
George Alger
Dale Carr
Charles Jones
Joseph Mogavero

Auditorium Presentations
Timothy Carmichael
Chris Jung
Christopher Carmichael

BBS Champion
Bernie Mayoff

Information/Registration
Booth

Statistician:
Connie Testa
Scheduler:
Randi Boucher
Anchors:
Harvey Andrews
Dianne Arnold
John Arnold
Ralph Beaver
John Ferguson
Paul Fredd
Rick Griffith

Allan Harbaugh
Hank Holt
David Huckabee
Claude McClure
Raymond Reyes
Everett Turner
Jean Waldrep
Peyton Weaver
Paul Williams

Booth Crew:
Earl Bills
Connie Cate
Nancy Feaster
Glenn Hunt
David Martin
Robert Miedke
Ed Moreland
David Troy
David Waldrup
Bob Wuller

Floater:
Pehl. Lee

Disk of the Month (DOM)

DOM Desk Crew:
Joe Allen
Doug Athas
Berny Baars
Roy Bales
Ralph Beaver
Rob Bender
Charles Carter
Gene Carlton
Don Chick
James Donlon

Shawn Dunn
Charles Fernandez
Vincent Gaines
Thomas Goodwin
Pat Henley (2 hrs.)
Jo Johnston
Mark Kidwell
Duane Martin
Cliff Murphy
Bob Post
George Read
Rob Reynolds
Craig Ringener
Jerry Stone
Oscar Tyler

With Special Thanks to:
Set-Up Crew:
Bill Chambliss
Jay Chambliss
Kent haven
Pat Henley

David Huckabee
Jerry Stone
Shift Supervisors:
Joe Allen
Jay Chambliss
Don Chick
Kent Haven
Pat Henley
Duane Martin
Inventory and Take-Down
Crew:
Charles Carter
Shawn Dunn
DOM Desk Scheduler:
Charles Cashion
Disks-for-Review Manager:
Howard Hamilton
Disk Production:
Kathryn Loafman
Kenneth Loafman

**We still need a few more
good volunteers...
Call one of the numbers at the right
and plan to help on Super Saturday.**

VOLUNTEER INFORMATION

1. Via BBS: (214)387-2751, (214)387-2752 or (214)263-9036 (metro). Sign up on the Volunteer Conference - make the subject matter your area of interest.

2. Meeting day: Sign up at the Information Booth or DOM Booth to work those areas in a coming month.

3. By phone:

| | |
|--|------------------------------|
| Auditorium Presentations Timothy Carmichael | 661-4628 (w) |
| DOM Booth Scheduler Charles Cashion | 881-0952 (h) 519-2583 (w) |
| DOM Software Review Howard Hamilton | 644-5721 (h) |
| Information Booth and General Information Connie Andrews | 828-0699 (h) |



9:00 AM - 10:00 AM

The Norton Utilities
Symantec Corporation

(See page 1 for description
of programs.)

10:00 AM - 11:00 AM

Norton Desktops for DOS and Windows
Symantec Corporation

11:00 AM - 11:30 AM

NTPCUG Business Meeting

1:00 PM - 2:00 PM

Find Your Next Home With a PC
COMARD Network

Special Interest Groups

| | | |
|---------------------------|---|--|
| SIG Coordinator | Alex Lilley | (214)953-4970 w (214)517-7430 h |
| ACTI | Paul Williams Michael Hill Jim Thompson | (214)423-7585 w (214)487-0085 w |
| Alpha Four | Ron Jackson | (214)276-3661 |
| Assembler | Frank Cavallito | (214)423-8221 h |
| BASIC Prog-Adv. | Mike Flrh | (214)827-7734 |
| BASIC Prog-Visual | Woody Pawitt | (214)230-3485 w (214)283-2292 h (214)235-5968 |
| BASIC Prog-Begin. | Jim Carter Charles Jacobus | (214)224-2880 h (214)296-9736 w (214)233-8353 w |
| Business Applic. | Bruce Schubert | (214)775-1603 |
| C Lang. Begin. | Stan Millam | (214)343-3862 h |
| C++ / Advanced C | Kant Cobb Tom Cook | (214)341-1890 w (214)618-8002 h |
| Communications | Doug Gorrie | (214)464-7942 w (817)731-1308 h |
| Community Svc | Bill Green Alex Lilley | (214)953-4970 w (214)517-7430 h |
| Comp Aided Design | Bill Sephton | (214)296-1799 w |
| DAC Software | Purt Shaw | (214)669-9633 w (214)235-2559 h |
| DOS | Jim Holsington Reagan Andrews, Ph.D. | (214)416-3101 h (214)828-0699 h |
| Fox Pro | Kevin White | (214)844-7536 |
| Genealogy | Al Sanford | (214)278-7888 h |
| Hdw Solutions | David McGehee Gary Johnson | (214)681-0202 h (214)937-9676 w (214)937-5851 h |
| Investors | Nash Kapoor | (214)458-9158 |
| Local Area Net | Bernie Van Roskel | (817)461-4120 w (817)451-4540 h |
| Spreadsheet | Francis Bright Mark Gruner Pat Henley | (214)964-8174 h (214)271-4911 h (214)229-9216 w (214)818-1808 h |
| MS Works | Betty Brooks | (214)827-7734 |
| OS/2 Dev | Mike Flrh James Dunn | (214)279-1798 h (817)962-4596 w (817)481-4966 w |
| OS/2 for End Users | Bob Farmer | (817)481-6625 (h) |
| Paradox | Fred Williams Greg Kane | (214)492-1315 (214)299-9318 h (214)241-3307 w |
| Personal Users | Bob Presley Bob Russell | (214)867-1679 h (214)422-4269 h |
| Programmers | Kent Kingery | (214)458-9711 w (214)317-0125 h (214)418-3101 h (817)430-8148 |
| Quicken | Jim Holsington Billy Pitts | (214)352-0888 h (214)495-4410 |
| R:Base | Don Branham | (214)271-4911 h |
| Roots III | John Wylie | (214)229-9216 w |
| Software Review | Pat Henley | (214)271-4911 h (214)229-9216 w |
| Spreadsheet | Mark Gruner Betsy Brooks Pat Henley | (214)618-1808 h (214)271-4911 h (214)229-9216 w |
| StarText | Beverly Kurlin | (817)955-9594 h |
| Ti Pro | Jim Boughton James Corbett | (817)478-6665 h (214)821-4788 h (214)634-2360 w (214)348-3766 h |
| Unix/Xenix | Kurt Krider Doug Scott | (817)267-0758 h (817)878-0367 w (214)604-2226 w |
| Windows Applic. | Arthur English | (214)818-1266 h |
| Windows Dev. | Arthur English | (214)818-1266 h |
| WORD | Reagan Andrews, Ph.D. David McGehee | (214)828-0699 (214)681-0202 h |
| WordPerfect | Dorothy Bertine Lori Quinn | (817)387-9993 h (214)255-0555 w Metro (817)481-6453 h |
| | Mitch Millam | (214)823-9837 w |

Special Interest Group Meetings

For possible time changes, check the Bulletin Board just before the meeting
and the overhead display in the lobby at INFOMART.

| | | |
|---|---|---|
| 9:00 - 9:55 | 11:00 - 11:55 | 12:00 - 12:55 cont |
| BASIC Programming-Visual DOS General Genealogy Hardware Solutions Personal Users Quicken Software Review Windows Applications WordPerfect | BASIC Programming-Begin.. Assembler Community Service Family Roots - Gnlgy. MS Works Roots III - Genealogy Spreadsheet Developers Windows Developers | R:Base TI Pro General Mng cont |
| 10:00 - 10:55 | 11:30 - 11:55 | 1:00 - 1:55 |
| BASIC Programming-Adv. CAD dBase for TI Pro Fox Pro Database Local Area Networks PAF - Genealogy Paradox Personal Users Unix/Xenix | Orientation TI Pro General Mng | ACTI Beginners C Language Business Apps./DAC Easy OS/2 Developers Personal Users Spreadsheet StarText WORD |
| | 12:00 - 12:55 | 2:00 - 2:55 |
| | Alpha Four C++/Advanced C Communications Investors OS/2 for End Users Personal Users | Advanced Programmers BBS |

North Texas PC Users Group, Inc.

P.O. Box 780066, Dallas, TX 75378-0066

Phone (214)746-4699 for recorded information about the User Group and meeting dates.

The North Texas PC Users Group, Inc., is a non-profit, independent group, not associated with IBM or any other Corporation. Membership is open to owners and others interested in exchanging ideas, information, hardware, predictions, and other items related to IBM Personal and compatible computers. To join the Group, complete the application blank printed elsewhere in this newsletter, and send it with \$24 membership dues to the Membership Director whose address is shown below. A subscription to the newsletter is included with each membership. The Group meets once each month, usually on the second Saturday. See cover for date, time and place of the next User Group meeting.

Board of Directors

Andy Oliver, Chair
Reagan Andrews
Doug Gorrie
Mark Gruner
Jim Holsington

NOTE: To access the BBS Metro line from outside Area Code 214, use Area Code 214. (This is NOT a toll call from Fort Worth and the Mid-Cities area.)

NTPCUG BULLETIN BOARD (214)387-2751
(214)387-2752
(214)263-9036 (Metro)

SYSOP: - Tom A. Prickett
TBBS: Fred Williams
User Relations: Adam Peterson
Information Mgt: Doug Gorrie
Technical Services: Leroy Teunison
Adviser: Pete Testa

Voice line for validation problems:
(214)565-2814 Ask for Adam

Address Changes, etc..

Payment of dues, address changes, and inquiries about membership should be directed to

NTPCUG Membership Director
P.O. Box 780066
Dallas, Texas 75378-0066

(Check newsletter mailing label for your renewal date..)

Members Emeritus

Phil Chamberlain
John Pribyl
Jim Holsington
Stuart Yarus

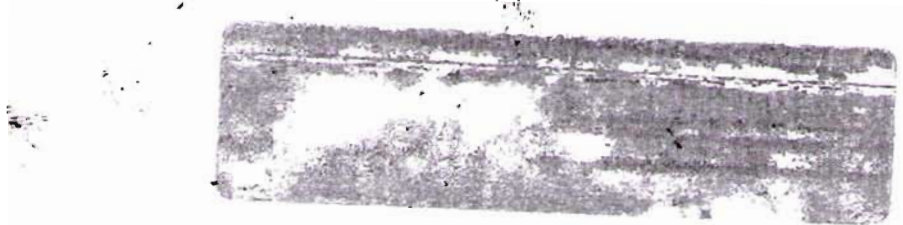


North Texas PC Users Group
P.O. Box 780066
Dallas, TX 75378-0066

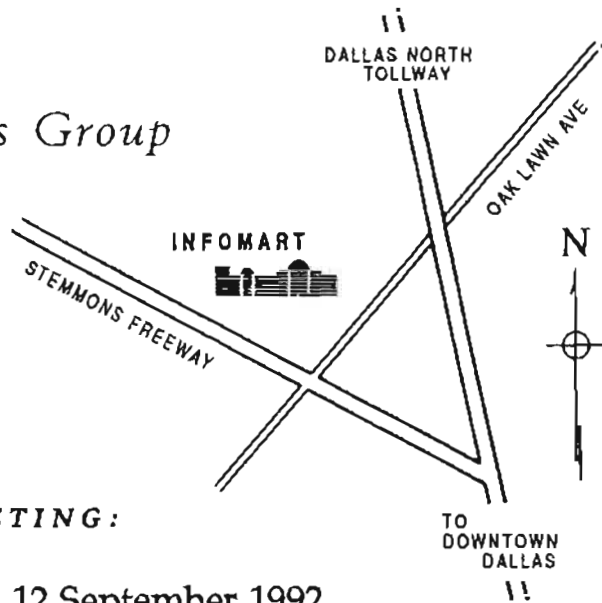
Non Profit Org.
U. S. Postage
Paid
Arlington, TX
Permit No. 823

Address Correction Requested.

11.9



North Texas PC Users Group



NEXT MEETING:

12 September 1992